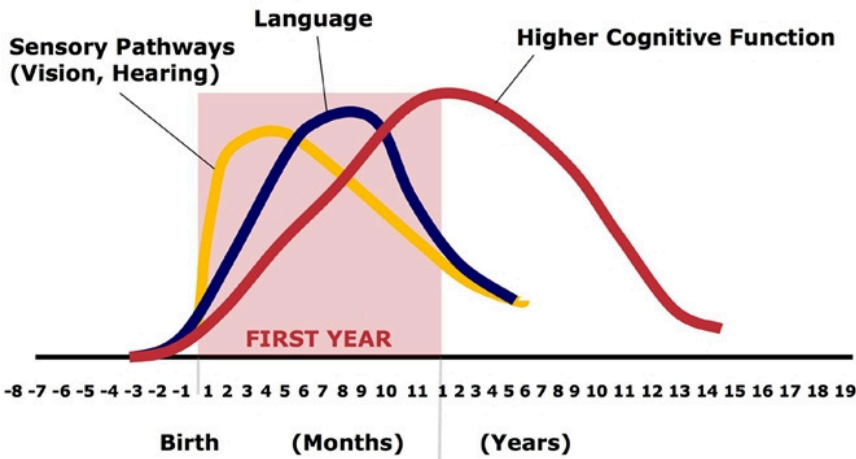


ANNUAL OVERVIEW



WHY EARLY LITERACY MATTERS:



Cognitive processes develop rapidly in the first few years of life. At birth a baby's brain is only 25% of its adult size. In the first few years of life, a child's brain builds **1 Million** connections per second! By age three a child's brain will be 85% of its adult size. By the time a child enters kindergarten, their brain is nearly fully formed. (1)



85% of a person's intellect and social skills are developed by age 5.

95% of public investment in education occurs after age 5, when the most critical learning years have passed. (2)



Children in middle- and high-income homes have an average of **13 books** per child.

Children living in poverty have an average of **1 book per 300 children**. (3)



Because of this, preschoolers from low-income families have fewer language and literacy opportunities than others - **a major reason why they lag behind** in reading achievement throughout the school years. (4)

Children growing up in homes with at least

20 Books

GET TWO YEARS MORE SCHOOLING

than children from bookless homes, independent of their parents' education, occupation, and class. (5)

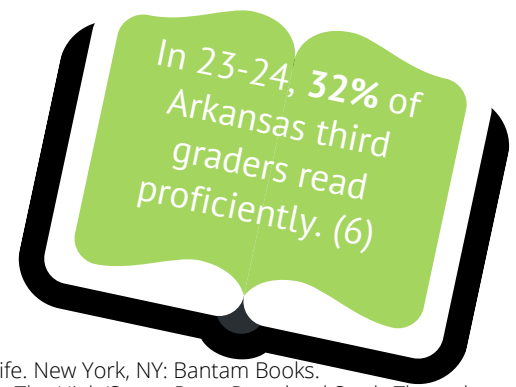


Chart: Human Brain Development, C.A. Nelson (2000). Credit: Center on the Developing Child

- Eliot, L. (1999). What's going on in there?: How the brain and mind develop in the first five years of life. New York, NY: Bantam Books.
- Schweinhart, L.J., Montie, J., Xiang, Z., Barnett, W.S., Belfield, C.R., & Nores, M. (2005). Lifetime Effects: The High/Scope Perry Preschool Study Through age 40. Ypsilanti, MI: High/Scope Educational Research Foundation.
- Neuman, S.B. & Dickinson, D.K. (Ed.) (2006). Handbook of Early Literacy Research, Volume 2. New York, NY: The Guilford Press.
- Berk, L. E. (Ed.). (2009). Child Development (8th ed.) Boston, MA: Pearson Education, Inc.
- Evans, G. W., & Kantrowitz, E. (2002). Socioeconomic status and health: The potential role of environmental risk exposure. Annual Review of Public Health, 23, 303-331. doi: 10.1146/annurev.publhealth.23.112001.112349
- Arkansas Community Foundation, Aspire Arkansas Report, accessed March 3, 2024. <https://www.aspirearkansas.org/>

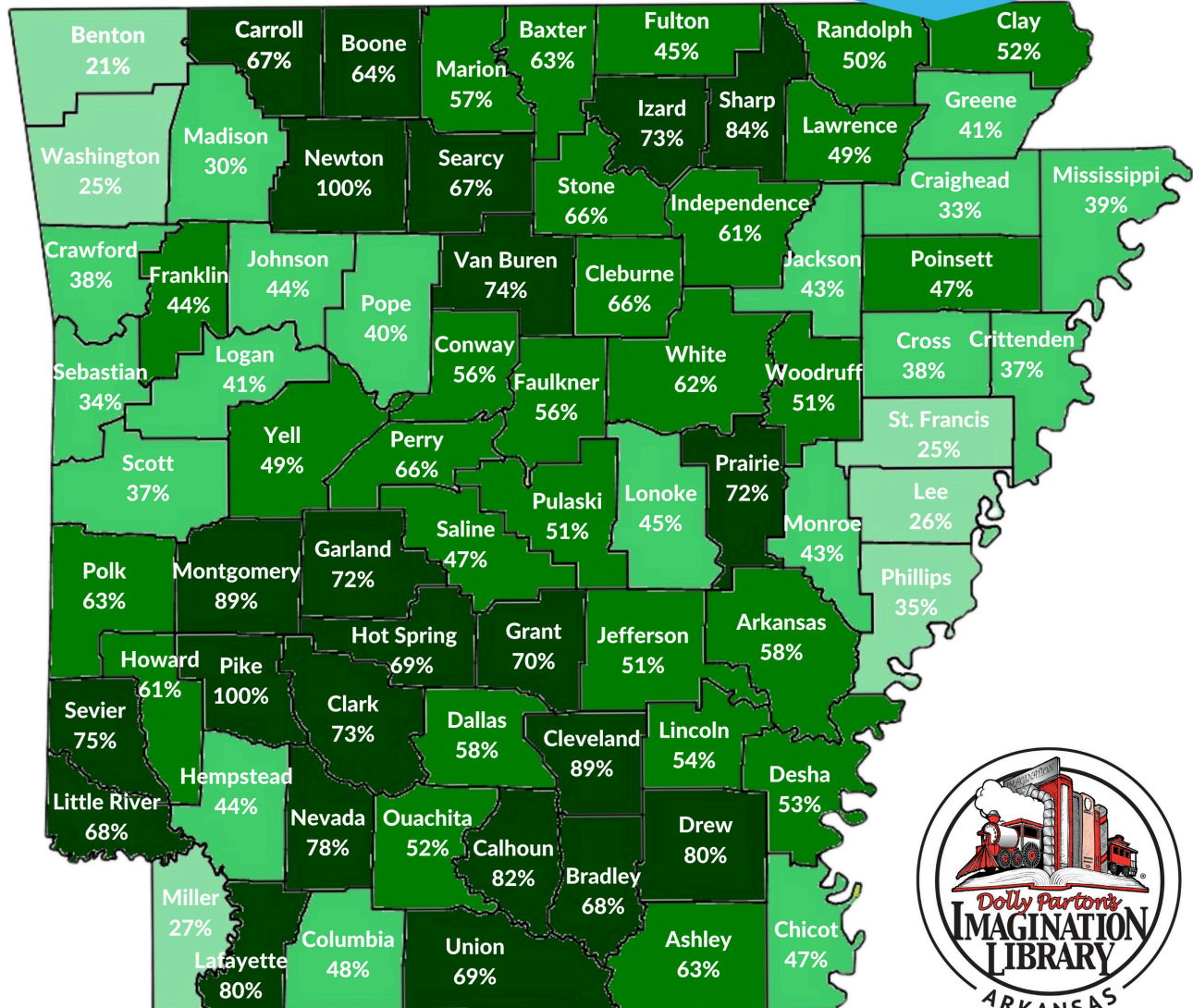
2024 IMPACT REPORT

1,080,190 Books
were mailed to
Arkansas children in
2024.

Investing in Our Future:
Arkansas' Commitment to Early Literacy

Dolly Parton's Imagination Library in Arkansas

46% of kids in Arkansas
between birth and age 5
are currently enrolled
(83,069 children).



Updated December 1, 2024

Percentage of children enrolled in each county. Enroll at ArkansasImaginationLibrary.org

46%

of Arkansas' 181,324 preschoolers are enrolled in the Imagination Library.

More than
83,000

Arkansas children age 0 to 5 are currently receiving books.

Over
120,000

five-year-olds have graduated from the Imagination Library program since 2004.

5.4 Million

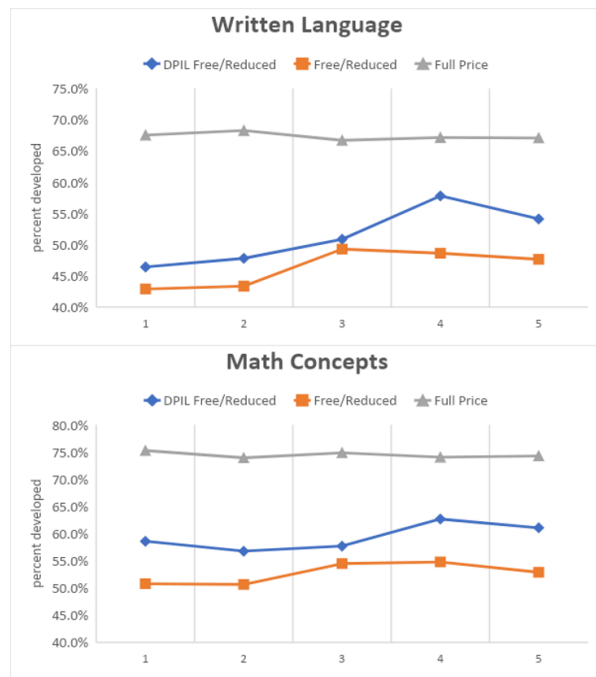
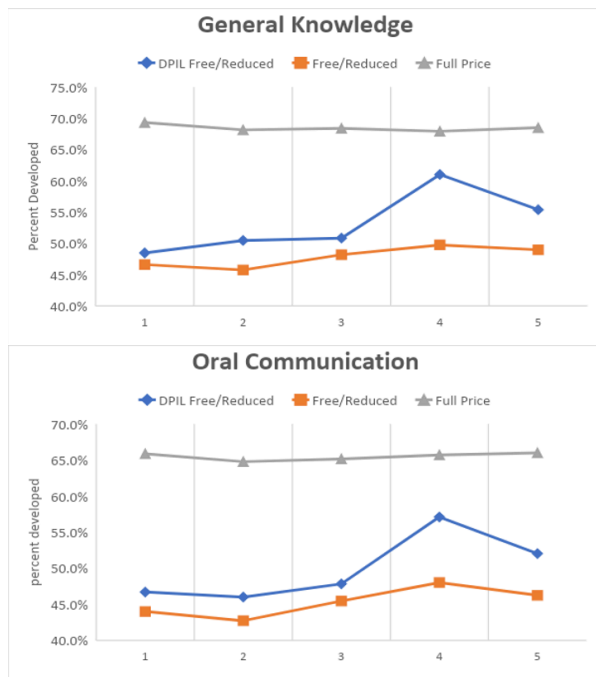
books (and counting) have been delivered to **228,090** children since 2004.

Arkansas Students **BENEFIT** from Dolly Parton's Imagination Library

Since launching in 1995, Dolly Parton's Imagination Library (DPIL) has become the preeminent early childhood book gifting program in the world. The Imagination Library mails more than 3.6 million high-quality, age-appropriate books each month to registered children. Currently, every child in Arkansas, birth to age five, is eligible to sign up for Imagination Library.

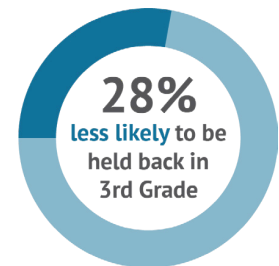
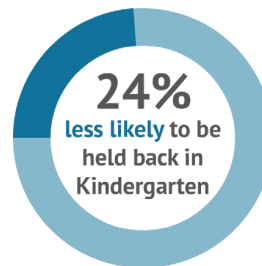
Dolly envisioned creating a lifelong love of reading. The impact of the program has been widely researched and results suggest positive increases in key early childhood literacy metrics. For more information, please visit arkansasimaginationlibrary.org/impact/

The Imagination Library's Impact on School Readiness



Analysis revealed that enrolled children were more school-ready and performed 5-10% better than unenrolled peers, particularly among low socioeconomic groups. This indicates that the Imagination Library program helps close both opportunity and achievement gaps.

DPIL Enrollees are:



Walker, J.T.; Parham, C. R.; Holland, G. (2023). Impact of Dolly Parton's Imagination Library Participation on Early Childhood Education Outcomes of Arkansas Students [Unpublished Manuscript]. Arkansas Research Center, University of Central Arkansas.