



ANNUAL REPORT 2025



Charlotte Parham & Fred Leonard **EXECUTIVE DIRECTOR** **BOARD CHAIR**

As the year comes to a close, we are deeply grateful for the community that makes Arkansas Imagination Library possible.

Thanks to your support, Dolly Parton's Imagination Library now reaches families in every county and ZIP code across Arkansas.

Because of our legislators, donors, volunteers, Local Program Partners, and supporters, more than 82,000 Arkansas children are currently enrolled, and over 256,387 children and families have been impacted since 2005. These numbers represent families reading together and children building strong foundations for lifelong learning.

The future is bright, and we are excited for what lies ahead in 2026 and beyond as we continue working toward a free, high-quality book each month for every Arkansas child from birth to age five.

Thank you for believing in this mission and for making it possible.

This is your impact—your generosity at work.

Wishing you a joyful holiday season,

Charlotte Parham

Fred Leonard



Dr. Linda Eilers
Vice Chair

Dr. Houston Davis
Board Member

Dr. Bobby Hart
Board Member

Mireya Wreith
Board Member

Dr. Sylvia Simon
Board Member

Lavon Morton
Treasurer/Secretary

Jackie Govan
Board Member

Leigh Scanlon Keener
Board Member

Lisenne Rockefeller
Board Member

Sen. Clarke Tucker
Board Member

Dr. Richard Valentin
*Board Emeritus
Member*

Jerry Adams
*Board Emeritus
Member*

Eddie Lee Herndon
*Board Emeritus
Member*

A YEAR IN REVIEW



987,639
books mailed to
Arkansas children
in 2025

50
nonprofit
Local Program
Partners

50%
monthly funding match
provided to all
Local Program Partners

9
new
Local
Program
Partners:

- Achievers Learning Academy
- Brinkley Public Schools
- Child Care Aware of North Central Arkansas
- Friends of Marion County Library
- Joe and Helen Harris Foundation
- Johnson County Library
- Lee County School District
- River Valley Adult Learning Alliance
- Searcy Public School District

45%
of all 0-5 year olds in
Arkansas (182,438) are
enrolled in the program.

107,306 +
children impacted by
Arkansas's Imagination
Library in 2025

140,000
children have graduated
from the program
since 2005

JOURNEY OF A BOOK

How three non profits work together to deliver 82,000+ books each month.

A caregiver enrolls their child at ArkansasImaginationLibrary.org.



The Dollywood Foundation provides access to books for \$2.60 each, due to partnerships with Penguin Random House and USPS.



A child's first book arrives 8-12 weeks later. Then a monthly book will be delivered until a child's fifth birthday at no cost to families.

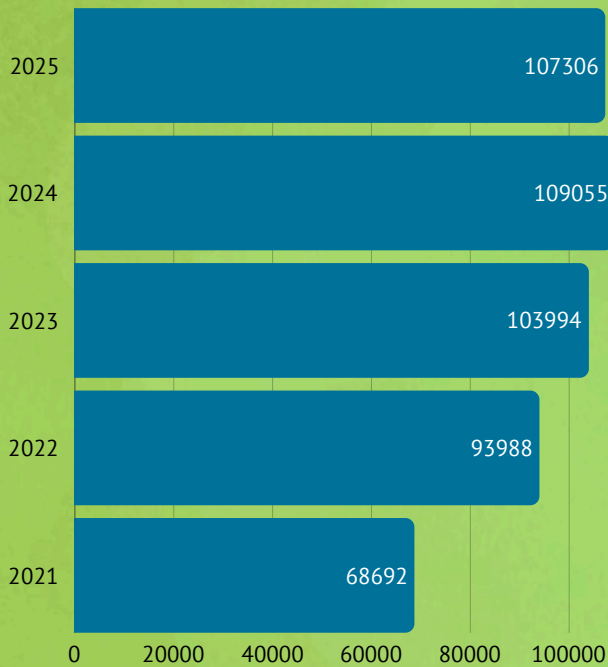
Local Program Partners cover the other \$1.30 per book mailed in their county or region. This structure ensures the program remains free to all families in Arkansas.



Arkansas Imagination Library receives funding from the Arkansas Department of Education and various donors to provide a monthly match of \$1.30 per book mailed each month in Arkansas.

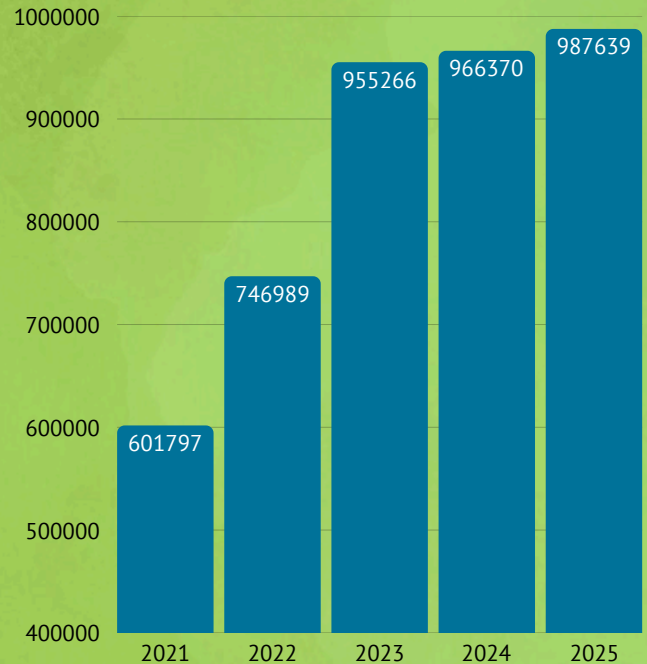
2025 MILESTONES

Number of Children Enrolled



Total children served since the program's establishment in 2005: **256,387**

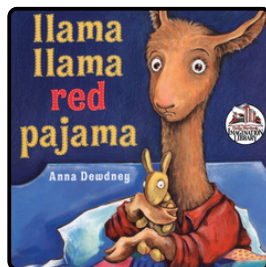
Number of Books Mailed



Total books mailed since the program's establishment in 2005: **6,544,777**

April:

Llama Llama Red Pajama won our March Madness Book Bracket.



June:

Arkansas started offering a complete bilingual English/Spanish book collection statewide.



July:

Arkansas Local Program Partners mailed over **6 Million Books** since 2005.

August:

UAMS began enrolling all newborns (and siblings) into the Imagination Library before they leave the hospital.

November:

United Way of Texarkana, Texarkana School District, and CHRISTUS Health partnered to enroll all newborns and their siblings in Miller County.

RESEARCH:

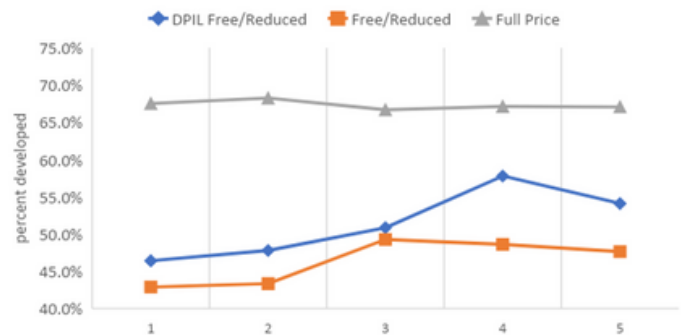
The Imagination Library's Impact on School Readiness

Analysis revealed that enrolled children were more school-ready and performed 5-10% better than unenrolled peers, particularly among low socioeconomic groups. This indicates that the Imagination Library program helps close both opportunity and achievement gaps.

General Knowledge



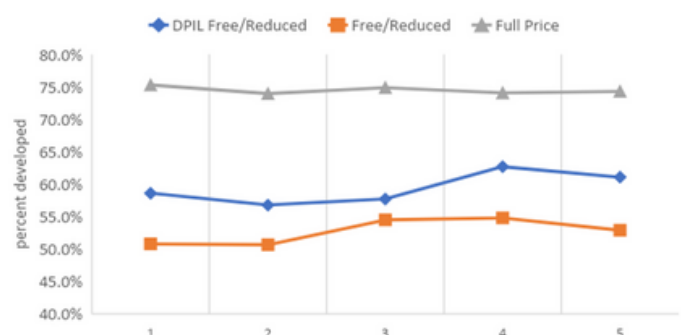
Written Language



Oral Communication



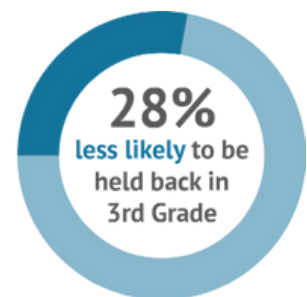
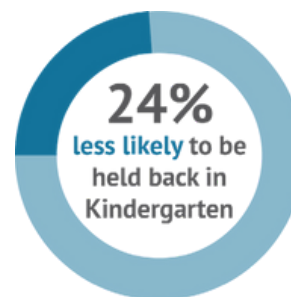
Math Concepts



“My daughter is 6 and reads fluently, thanks to the Imagination Library! We have always read together nearly every night, and now she’s well on her way. Thank you, Dolly!”

Mother, Pike County

DPIL Enrollees are:



Walker, J.T.; Parham, C. R.; Holland, G. (2023). Impact of Dolly Parton's Imagination Library Participation on Early Childhood Education Outcomes of Arkansas Students [Unpublished Manuscript]. Arkansas Research Center, University of Central Arkansas.

TESTIMONIALS

“My twins have gained such a love of books. We used Miss Dolly’s books to practice reading, and now they have so much confidence and pride reading them on their own. My favorite part is the family time we share snuggled together with each new story.”

- Mom, Benton County



“My children love getting a surprise in the mail! We call it ‘A New Book Day’ and they look forward to it each month. We have so many favorite books from the Imagination Library memorized because they request to read them over and over again.”

- Dad, Poinsett County



“My kids have learned to love reading and make it fun. They get so excited each month when their new Imagination Library book arrives with their name on it. Their favorite is *How We Say I Love You*—and that’s exactly what reading together feels like for us.”

- Mom, Faulkner County

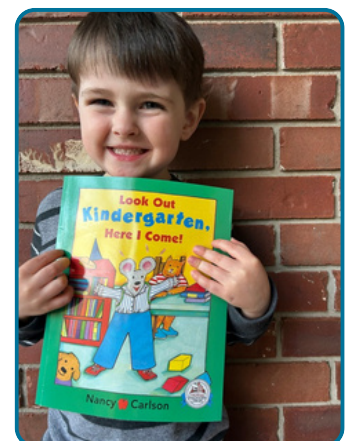
“We love our books! My son loves that they come with his name on them. I love the quality and that we get a new book every month, because books are expensive. We look forward to them all the time!”

- Mother, Phillips County



“Our Imagination Library books have brought so much joy and connection to our home. Each story gives us time together and helps our children learn and grow. It’s more than just reading—it’s family time we’ll always treasure.”

- Mom, Pulaski County



ARKANSAS'S LOCAL PARTNERS

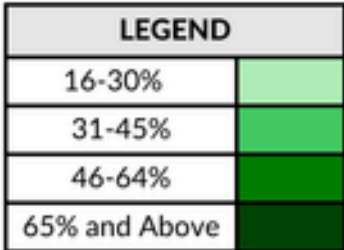
A Local Program Partner is a nonprofit organization who serves as the local representative for Dolly Parton's Imagination Library. Each Local Program Partner builds local relationships, manages the enrollment database, and fundraises for one-half (50%) of the monthly books and postage cost in the community.

- Achievers Learning Academy
- Ashdown Community Foundation
- Baxter County Library Foundation
- Boone County Imagination Library
- Bradley County Friends of the Library
- Brinkley Public Schools
- Building Bridges Developmental and Community Services
- Camden-Fairview School District
- Carroll County Youth Literacy Rotary Foundation
- Child Care Aware of North Central Arkansas
- Crossett Friends of the Library
- Elaine Community Opportunity Seekers
- Friends of Marion County Library
- Grant County Imagination Library
- Hampton School District/Calhoun County Library
- Hope School District
- Hot Spring County Imagination Library
- Imagination Library of Southwest Arkansas
- Imagination Library of Saline County
- Imagination Library of the Ouachitas
- Imagination Library of Arkansas County
- Independent Economic Development Council
- Joe and Helen Harris Foundation
- Johnson County Public Library
- Lee County School District
- Magnolia Junior Charity League
- Margaret Fisher Literacy Challenge, Inc.
- Mississippi County Regional Chamber of Commerce
- Nashville School District
- Nevada County Imagination Library
- Pulaski County Imagination Library
- Quality of Life Outreach, Inc.
- River Valley Adult Learning Alliance
- Rotary Club of Arkadelphia
- Rotary Club of Fordyce
- Rural Community Alliance
- Searcy County School District
- Searcy Public School District
- Southeast Arkansas Imagination Library
- Thayer Development & Improvement Organization, Inc.
- United Way of Fort Smith Area
- United Way of Greater Texarkana
- United Way of Union County
- United Way of Northwest Arkansas
- University of Central Arkansas - Division of Outreach
- Van Buren County Reads
- Youth Partners of Pine Bluff

Statewide Program Partners:

- Department of Human Services, Foster Care
- Baptist Health Foundation
- CHI St. Vincent Hospital

45% of kids in Arkansas between birth and age 5 are currently enrolled (82,446 children).



Updated December 1, 2025

Percentage of children, ages 0-5, enrolled in each county.
Enroll at [ArkansasImaginationLibrary.org](https://www.arkansasimaginationlibrary.org)



2025 BLUE RIBBON SELECTIONS

Titles on this list are subject to change.

**UNITED STATES
OF AMERICA**
Core Program

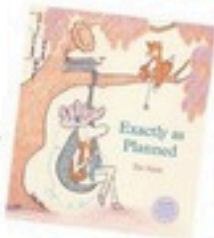
The first book a child receives is
The Little Engine That Could™
(customized version)

The month a child turns 5 they will receive
Look Out Kindergarten, Here I Come!
(customized version)

GROUP 6

Children born in 2020

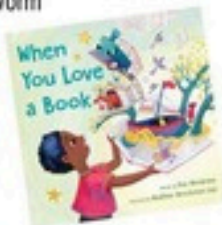
- Cinderella -- with Dogs!
- Rabbit's Snow Dance
- + The Tree in Me
- Joy Takes Root
- + First Day Critter Jitters
- You Are a Honey Bee!
- Help Wanted: One Rooster
- + Wild Horses
- Exactly as Planned
- Steppin' Out
- Grilled Cheese? Yes, Please!
- Something Wild
- The Power of Yeti



GROUP 5

Children born in 2021

- How to Get Your Octopus to School
- Full Moon Pups
- How to Say Hello to a Worm
- A Book for Bear
- Danbi's Favorite Day
- The Rabbit Listened
- When You Love a Book
- The Outside
- Being Home
- Enola's Best Friend
- There's a Monster in Your Book
- A Unicorn, a Dinosaur, and a -
- Shark Were Riding a Bicycle
- + Coat of Many Colors



GROUP 4

Children born in 2022

- + Corduroy
- How We Say I Love You
- A Little Emotional
- This is the Tree We Planted
- Nubby
- Raindrops to Rainbows
- Gift & Box
- Roar-Choo!
- Little Owl's Love
- Jonny Lambert's Bear -
- and Bird Explore the Seashore
- Gaga Mistake Day
- A Little Like Magic
- What's New, Daniel?
- Somewhere Right Now
- Rocket Ship, Solo Trip



GROUP 3

Children born in 2023

- The Animal Song
- Where Do Diggers Sleep at Night?
- Squeak!
- + Green Tractor
- The Very Hungry Caterpillar's Nature Walk
- The Very Hungry Caterpillar Eats Breakfast
- Birding for Babies: Backyard Birds
- Dandelion Magic
- Ice Cream Face
- K is for Kindness
- + Solitary Animals
- The Big Slide
- Llama Llama Meets -
- the Babysitter
- Buffalo Fluffalo



GROUP 2

Children born in 2024

- Where is Your Nose?
- Eric Carle's Twinkle, Twinkle, Little Star -
- and Other Nursery Rhymes
- Home Builders
- The Very Hungry Caterpillar's First Summer
- + • My First Bilingual Farm
- + Richard Scarry's 100 First Words
- Tad and Dad
- Llama Llama Feelings
- "Slowly, Slowly, Slowly," Said the Sloth
- My Feet Go
- Bedtime, Here I Come!
- Little Poems for Tiny Ears
- Play with Me
- Llama Llama Red Pajama
- Good Night Gorilla



GROUP 1

Children born in 2025

- Llama Llama Hide & Seek
- Look at the Animals
- Can You Guess? Animal Sounds -
- with The Very Hungry Caterpillar
- Pudgy Pat A Cake
- Pudgy Book of Mother Goose
- + Baby Sounds
- Baby! Talk!
- + Sleep Tight, Polar Bear
- + Who Says Quack?
- Rainbow Colors Peekaboo!
- Roald Dahl Colors



• Signifies a new book to the program + Signifies a bilingual English / Spanish title or Hispanic Content



Penguin
Random House
PENGUIN YOUNG READERS



Penguin
Random
House



2025 LEADING DONORS

THANK YOU to our Individual, Corporate, & Foundation Donors!
Your support ensures the success of our mission.

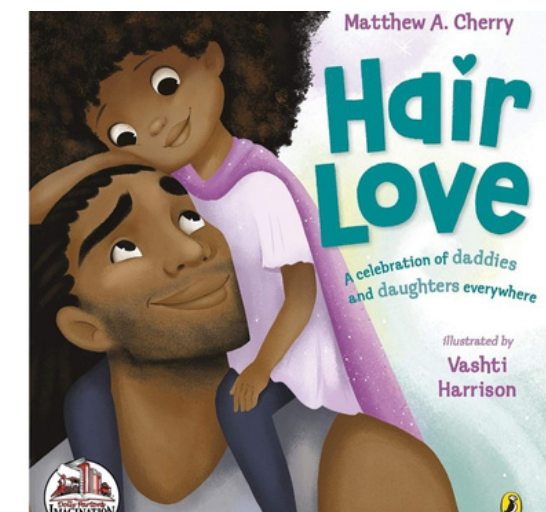
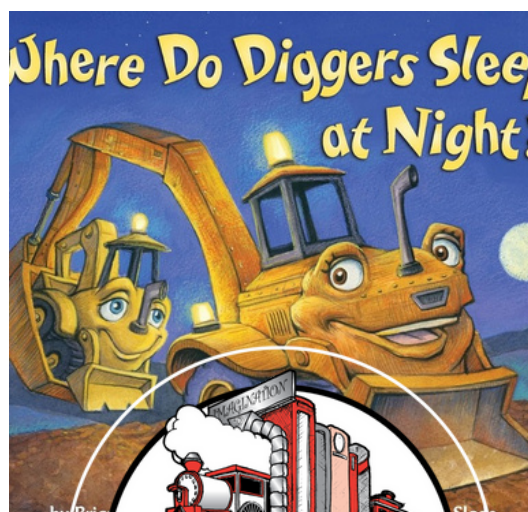
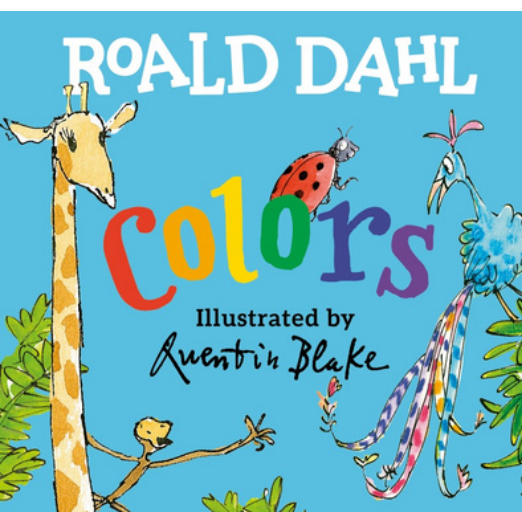
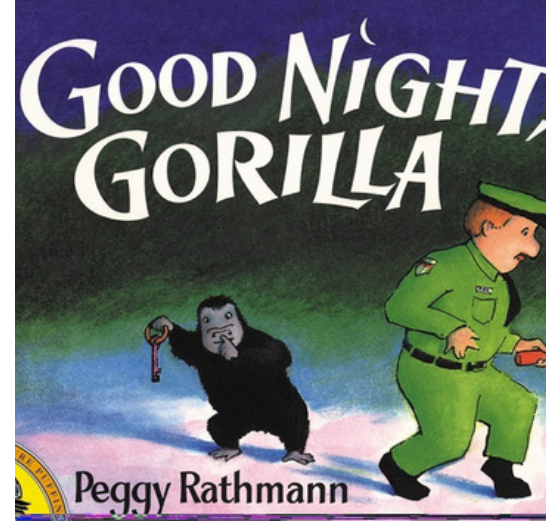
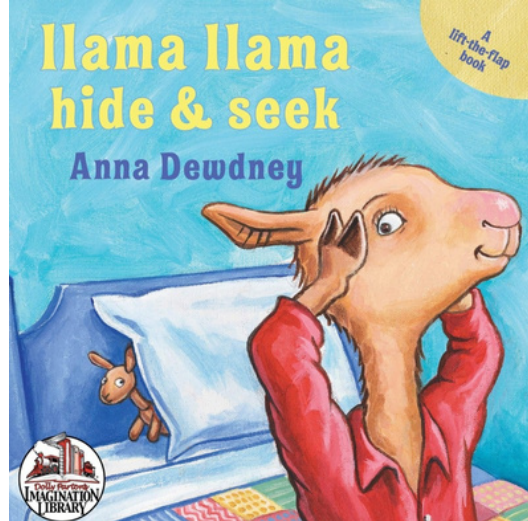
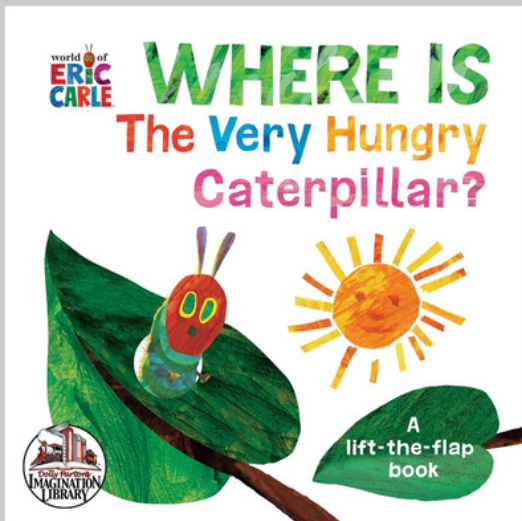
Individual Donors:

Melissa Abuzeid	Julia Garcia	Zebulon Holland	Leigh Scanlon
Jerry Adams	Joe Giammo	Kaylie Kostyurenki	Sentell Family
Sara Allen	James Gibbs	Fred & Janene Leonard	Mary Shaw
Tammy Benson	Patricia Gibson	John Loewer	Sylvia Simon
Taylor Boerner	Sidney Gilbert	Rachel McManus	Maria Swicegood
John & Sherry Carter	Jackie Govan	Mike Mills	Clarke Tucker
Brenda Danforth	Erika Gruenberg	Leigh Moravec	Sandra Tush
Houston Davis	Amy Hall	Katherine Neblett	Janet Udouj & Neal
Mable & Charles	William Harrison	Charlotte Parham	Beaton
Donaldson	Bobby Hart	Wendy Paty	Dick Valentine
Michael Duffy	Sharon Heflin	Ellen Ramsey	Marville Vandiver
Linda & Walt Eilers	Kelli Henderson	Joe Riddle	Meggi Wardein
Aaron Flemister	Lou Henslee	Lisenne Rockefeller	James & Judy Wear
	Eddie Herndon	Charis Roehrenbeck	Valerie Whitson
		Renae Rountree	Fawad Zia

Corporate, Foundation & Organization Donors/Partnerships:

Arkansas Community Foundation and Affiliates	Rose Charitable Trust
Arkansas Department of Education, Division of Elementary and Secondary Education	Subaru of Little Rock
Arkansas Department of Human Services, Division of Children & Family Services	Summit Cares
Arkansas Head Start	United Way of Northeast Arkansas
Bank OZK	Walmart Community Giving
Baptist Health Foundation	Winthrop Rockefeller Foundation
Batesville Rotary Club	
Baum Foundation	
Bob White Memorial Foundation	
Carl B. and Florence E. King Foundation	
CHI St. Vincent	
Craighead Electric Cooperative Corporation	
Entergy Arkansas	
First Security Bank	
GFL Environmental USA	
Harper Charitable Fund	
Heart of Arkansas United Way	
Hussman Foundation	
Legacy Termite & Pest Control	
McKinney Charitable Trust	
Nora Roberts Foundation	
Ritter Family Endowment	





Connect With Us!

ArkansasImaginationLibrary.org

 @ArkansasImaginationLibrary
  @ARImaginationLibrary
  @Arkansas-Imagination-Library



DONATE



ENROLL